

Refrigeration Solutions

for boating enthusiasts



PICTURE CREDITS

Boston Whaler • www.bostonwhaler.com
Island Packet Yachts • www.ipy.com
JC Pontoon • www.jcpontoon.com
Sea Ray Boats • www.searay.com



■ Dometic – Cruise In Comfort

Dometic is a world-leading supplier of dedicated systems and equipment for pleasure boats.

A partnership of innovative design and the highest standard of quality ensures that Dometic products satisfy and surpass the expectations of the most discriminating boat owner.

Index:	■ Front Loading, CR Series	4 – 9
	■ Front Loading, TJ Series	10 – 13
	■ Retrofit Applications: Refrigerators	14
	■ At-A-Glance Chart: Refrigerators	15
	■ Top Loading, CB Series	16
	■ Drawer Fridges, CD Series	17
	■ Portable, CF Series	18 – 19
	■ Cooling Kits, Adler/Barbour Series	20 – 21
	■ Cooling Kits, 80 Series	22
	■ Cooling Kit, CS-NC-15	23
	■ Cooling Kits, Grunert Series	24 – 27
	■ Cooling Kits, KRA Series	28 – 29
	■ Ice Crushing Systems, Eskimo Ice Series	30 – 31



*D*esigned for the rigors of marine use, the CR Series provides built-in refrigerators for every application. Each unit includes a flush-mount frame that will compliment any on-board galley or cockpit.

High-tech design: Each CR Series appliance is equipped with a premium Danfoss DC compressor, providing excellent cooling performance, minimal power consumption when operating on either DC or AC power, and superbly quiet operation.

Patented Double-Lock Door Mechanism:

During rough sea conditions, the refrigerator door remains securely closed, at the top and bottom, as a result of the patented double-lock door mechanism. It also incorporates the "vent" position, which holds the door slightly open when the refrigerator is not in use for easy defrosting and to prevent mildew.



AWARD WINNING DESIGN



"Beyond pleasing aesthetics, the new CR Series compressor refrigerators offer several clever design touches, including a lock to allow the cabinet to ventilate when not in use and a very positive latching mechanism."

As commented by the awards jury at METS Amsterdam—the world's leading trade show for marine equipment.

Front Loading Refrigerators

CR SERIES

Luxury Meets Performance and Top-of-the-Line Technology

Premium front loading refrigerators with freezer compartments

- Totally encapsulated freezer compartment eliminates the risk of ice-pick damage.
- Diagnostic troubleshooting indicator lights.
- Separate insulated freezer compartment with door.
- Door with double-lock (top/bottom) and dual function (locking/ventilation).
- Full-length recessed door handle provides comfortable opening and closing.
- Door with magnetic sealing gasket.
- Cool-blue interior light.
- Door hinge and locks (right/left) allows for reversible door opening. Left or right — the choice is yours.
- Interchangeable face panel to match decor.
- Flush mount flange provides a pleasing cosmetic appearance and eliminates protruding handle or locks. Space-saving flange is available as an option, when cabinet depth is limited.

QUALITY FEATURES



PREMIUM COOLING TECHNOLOGY

- > Danfoss BDF compressor from the market leader

ELEGANT DESIGN

- > Inside: Refreshing white interior with "Cool-Blue" light
- > Outside: Choice of face panels: black, white*, stainless-steel, brushed stainless-steel
- > Secure self-locking door
- > Smooth face: The handle is recessed into the fridge door
- > Flexible installation with flush mount flange (accessory: space-saver flange available)

HIGH-GRADE WORKMANSHIP

- > Metal frame construction
- > Stainless-steel hardware
- > Door with double lock (top/bottom) and dual functions (locking/ventilation)
- > Reversible door mount (left or right-side opening)

HOME-LIKE CONVENIENCE

- > Similar to quality household refrigerators, standard features include: egg tray, bottle holder, extra-large vegetable bin, versatile repositionable shelves and racks.

LUXURY EQUIPMENT

- > **Unique:**
All CR Series models feature a separate full-width freezer compartment.

*on select models only.

PREMIUM FREEZING

- > Separate freezer compartment with insulated door
- > Protected evaporator eliminates risk of ice-pick damage
- > Collection tray to capture defrost water or unit can be set up to drain to the bilge



NEW!



CR Series Bright Stainless-Steel Finish



CR-110ST-SS
Shown without flange.



CR-1065ST-SS
Shown without flange.



CR-1050ST-SS
Shown without flange.

Quality Features



CR-1080ST-SS
Shown without flange.



- Exclusive, protected evaporator eliminates the risk of ice-pick damage.



- Collection tray captures defrost water or can be configured to drain to the bilge.



- Cool-blue contemporary interior light. Diagnostic circuitry installed with green and red LED indicator lights.



- Patented double-lock door mechanism securely closes door at the top and bottom.



- "Computer style" AC socket enables easy-to-change-to-overseas cord and plugs.



- Face panel is interchangeable—even while installed in the boat.

CR SERIES

CR-1065E/F-W

CR-1050U/F



CR-1065ST/F-SS

CR-1050

Gross Capacity:	1.7 cubic feet (48.1 liters), 4.8 quarts (4.5 liters) in the freezer compartment
Voltage:	12/24 volts DC, 110/220 volts AC
Average Power Consumption:	40 watts / 3.3 amps
Insulation:	CFC-free polyurethane
Compressor:	Danfoss BD35F
Refrigerant:	Environmentally-safe R134a
Material:	Stainless-steel fittings, plastic interior, door frame in plastic body with coated metal frame
Color Options:	CR-1050U/F: black face panel, black door surround, black flush mount flange; CR-1050E/F-W: white face panel, silver door surround, silver flush mount flange; CR-1050E/F-SS: stainless-steel face panel, silver door surround, silver flush mount flange CR-1050ST/F-SS: brushed stainless-steel face panel, bright silver door surround, bright stainless-steel flush mount flange
Cut-Out Dimensions:	16"W x 21"H x 19.4"D (flush mount flange) 406mm x 533mm x 492mm 15"W x 21"H x 17.6"D (space-saver flange) 381mm x 533mm x 447mm
Net Weight:	42 lbs. / 19 kg.
Flange Options:	EST-0050U: black space-saver EST-0050E: silver space-saver EST-0050ST: stainless-steel space-saver
Replacement Flange:	EFM-0050U: black flush mount EFM-0050E: silver flush mount EFM-0050ST: stainless-steel flush mount

CR-1065

Gross Capacity:	2.3 cubic feet, (65.1 liters), 4.8 quarts (4.5 liters) in the freezer compartment
Voltage:	12/24 volts DC, 110/220 volts AC
Average Power Consumption:	40 watts / 3.3 amps
Insulation:	CFC-free polyurethane
Compressor:	Danfoss BD35F
Refrigerant:	Environmentally-safe R134a
Material:	Stainless-steel fittings, plastic interior, door frame in plastic body with coated metal frame
Color Options:	CR-1065U/F: black face panel, black door surround, black flush mount flange; CR-1065E/F-W: white face panel, silver door surround, silver flush mount flange; CR-1065E/F-SS: stainless-steel face panel, silver door surround, silver flush mount flange CR-1065ST/F-SS: brushed stainless-steel face panel, bright silver door surround, bright stainless-steel flush mount flange
Cut-Out Dimensions:	18.6"W x 20.7"H x 21"D (flush mount flange) 472mm x 525mm x 533mm 17.8"W x 20.7"H 19.1"D (space-saver flange) 452mm x 525mm x 485mm
Net Weight:	46 lbs. / 20 kg.
Flange Options:	EST-0065U: black space-saver EST-0065E: silver space-saver EST-0065ST: stainless-steel space-saver
Replacement Flange:	EFM-0065U: black flush mount EFM-0065E: silver flush mount EFM-0065ST: stainless-steel flush mount

CR-1080E/F-SS



CR-1080

Gross Capacity:	2.8 cubic feet, (79.1 liters), 4.8 quarts (4.5 liters) in the freezer compartment
Voltage:	12/24 volts DC, 110/220 volts AC
Average Power Consumption:	40 watts / 3.3 amps
Insulation:	CFC-free polyurethane
Compressor:	Danfoss BD35F
Refrigerant:	Environmentally-safe R134a
Material:	Stainless-steel fittings, plastic interior, door frame in plastic body with coated metal frame
Color Options:	CR-1080U/F: black face panel, black door surround, black flush mount flange; CR-1080E/F-SS: stainless-steel face panel, silver door surround, silver flush mount flange CR-1080ST/F-SS: brushed stainless-steel face panel, bright silver door surround, bright stainless-steel flush mount flange
Cut-Out Dimensions:	19.7 W x 25"H x 20.6"D (flush mount flange) 500mm x 635mm x 523mm 18.8"W x 25"H x 18.7"D (space-saver flange) 477mm x 635mm x 474mm
Net Weight:	52 lbs. / 23 kg.
Flange Options:	EST-0080U: black space-saver EST-0080E: silver space-saver EST-0080ST: stainless-steel space-saver
Replacement Flange:	EFM-0080U: black flush mount EFM-0080E: silver flush mount EFM-0080ST: stainless-steel flush mount

CR-1110

Gross Capacity:	3.8 cubic feet, (79.1 liters), 8.9 quarts (8.4 liters) in the freezer compartment
Voltage:	12/24 volts DC, 110/220 volts AC
Average Power Consumption:	45 watts / 3.75 amps
Insulation:	CFC-free polyurethane
Compressor:	Danfoss BD35F
Refrigerant:	Environmentally-safe R134a
Material:	Stainless-steel fittings, plastic interior, door frame in plastic body with coated metal frame
Color Options:	CR-1110U/F: black face panel, black door surround, black flush mount flange; CR-1110E/F-SS: stainless-steel face panel, silver door surround, silver flush mount flange CR-1110ST/F-SS: brushed stainless-steel face panel, bright silver door surround, bright stainless-steel flush mount flange
Cut-Out Dimensions:	21.5"W x 29"H x 21.7"D (flush mount flange) 546mm x 736mm x 551mm 20.6"W x 29"H x 19.9"D (space-saver flange) 523mm x 739mm x 505mm
Net Weight:	62 lbs. / 28 kg.
Flange Options:	EST-0110U: black space-saver EST-0110E: silver space-saver EST-0110ST: stainless-steel space-saver
Replacement Flange:	EFM-0110U: black flush mount EFM-0110E: silver flush mount EFM-0110ST: stainless-steel flush mount



*D*ometic's TJ Series of refrigerators and freezers are now available with a stainless-steel finish. These state-of-the-art units are designed to replace existing refrigerators and give your galley a more modern look.



TJ42RE-SS Refrigerator



TJF42-SS Full Size Freezer

Rugged Door Latch and Shelving Systems:

All models offer a number of refinements and improvements in the door and latch assembly. The doors and shelving systems are exceptionally strong. The latch system has been designed to withstand extraordinary rough treatment and to resist accidental opening. When heavily-weighted with beverages, the latch keeps the door securely closed, even in severe conditions. The moveable shelves are locked in place and will not budge under rough seaways.

APPROVED

All models are UL, CSA, and CE Approved.

Front Loading Refrigerators

TJ SERIES

Unparalleled Reputation for Long-Lasting Performance

Premium front loading refrigerators with freezer compartments

- Freezer compartment with door.
- Adjustable locking shelves for efficient use of interior space and safety underway.
- New, stronger refrigerator latch system.
- Door with magnetic sealing gasket.
- Bright interior light.
- Stainless-steel available on all models.
- Flush mount flange provides a pleasing cosmetic appearance and eliminates protruding handle or locks. TJ18S has a non-flush flange.
- All models are UL / CSA / and CE approved.

QUALITY FEATURES





ELEGANT DESIGN

- > Inside: Refreshing white interior with light
- > Outside: black or stainless-steel
- > Secure self-locking door

PREMIUM COOLING TECHNOLOGY

- > Danfoss BDF compressor from the market leader

EXCEPTIONAL QUALITY AND STYLE

- > All stainless-steel models feature a "wrapped door"

PREMIUM FREEZING

- > Separate freezer compartment with insulated door

HIGH-GRADE WORKMANSHIP

- > Rigid external metal chassis
- > Stainless-steel hardware
- > Magnetic door seal
- > New, stronger latch system

BETTER THAN HOME CONVENIENCES

- > Adjustable and locking shelves for efficient use of interior space and safety underway

APPROVED!

- > **Unique:**
All TJ Series models are UL, CSA, and CE Approved

TJ SERIES



TJ18-SS

TJ22-SS

TJF42-SS. Full size freezer.

TJ18, TJ18S

Gross Capacity:	1.8 cubic feet (51 liters), 4.8 quarts (4.5 liters) in the freezer compartment
Voltage:	12/24 volts DC Optional 115/230 volts AC, add "AC" to part #
Average Power Consumption:	40 watts / 3.3 amps
Insulation:	CFC-free polyurethane
Compressor:	Danfoss BD35F
Refrigerant:	Environmentally-safe R134a
Material:	Stainless-steel fittings, plastic interior, door frame in plastic body with coated metal frame
Color Options:	TJ18-SS: stainless-steel (flush mount flange) TJ18S-SS: stainless-steel (non-flush flange) TJ18: black (flush mount flange) TJ18S: black (non-flush flange)
Cut-Out	15.75"W x 21.06"H x 19.75"D (flush mount flange) 400mm x 535mm x 502mm
Dimensions:	15.625"W x 20.563"H x 18.25"D (non-flush) 397mm x 523mm x 464mm
Net Weight:	40 lbs. / 18.14 kg.
Option:	Space-saving flange: #TJ18S-SS

TJ22

Gross Capacity:	2.2 cubic feet (63 liters), 4.8 quarts (4.5 liters) in the freezer compartment
Voltage:	12/24 volts DC Optional 115/230 volts, add "AC" to part #
Average Power Consumption:	40 watts / 3.3 amps
Insulation:	CFC-free polyurethane
Compressor:	Danfoss BD35F
Refrigerant:	Environmentally-safe R134a
Material:	Stainless-steel fittings, plastic interior, door frame in plastic body with coated metal frame
Color Options:	TJ22-SS: stainless-steel TJ22: black
Cut-Out	18.31"W x 21.06"H x 21"D (flush mount flange)
Dimensions:	466mm x 535mm x 534mm
Net Weight:	46 lbs. / 20.87 kg.



TJ42RE-SS. Full size refrigerator.



TJ85AC-SS

TJ42

Gross Capacity:	4.2 cubic feet (119 liters), 8.9 quarts (8.4 liters) in the freezer compartment
Voltage:	12/24 volts DC Optional 115/230 volts, add "AC" to part #
Average Power Consumption:	45 watts / 3.75 amps
Insulation:	CFC-free polyurethane
Compressor:	Danfoss BD35F
Refrigerant:	Environmentally-safe R134a
Material:	Stainless-steel fittings, plastic interior, door frame in plastic body with coated metal frame
Color Options:	TJ42-SS: stainless-steel refrigerator with freezer TJ42: black refrigerator with freezer TJ42RE-SS: stainless-steel refrigerator only TJ42RE: black refrigerator only TJF42-SS: stainless-steel freezer only TJF42: black freezer only
Cut-Out Dimensions:	21.37"W x 30.625"H x 21.5"D (flush mount flange) 543mm x 778mm x 548mm
Net Weight:	69 lbs. / 31.30 kg.

Available as a right hand opening door as an AC/DC model. Specify "RT". Example: TJ42AC-RT. "RE" is refrigerator only. Use TJ42RE side-by-side with TJF42.

TJ85AC

Gross Capacity:	8.5 cubic feet (241 liters), 1.6 cubic feet (45 liters) in the freezer compartment
Voltage:	12/24 volts DC, 115/230 volts
Average Power Consumption:	65 watts / 5.4 amps
Insulation:	CFC-free polyurethane
Compressor:	Danfoss BD35F
Refrigerant:	Environmentally-safe R134a
Material:	Stainless-steel fittings, plastic interior, door frame in plastic body with coated metal frame
Color Options:	TJ85AC: black TJ85AC-SS: stainless-steel
Cut-Out Dimensions:	23.5"W x 53"H x 23.81"D (flush mount flange) 599mm x 1347mm x 605mm
Net Weight:	112 lbs. / 50.80 kg

Available as a right hand opening door. Specify "RT". Example: TJ85AC-RT. Light in freezer is photographer's effect only. Equipped with light in refrigerator.

Front Loading

CURRENT BRAND	CURRENT MODEL	DOMETIC REPLACEMENT MODELS)
Indel	CR 42	CR-1050 or TJ18-SS
Indel	CR 49	CR-1050 or TJ18-SS
Indel	CR 65	CR-1065 or TJ22-SS
Indel	CR 85	CR-1080 or TJ22-SS
Indel	CR 90	TJF42RE-SS
Indel	CR 130D	TJ42RE-SS
Indel	CR 130	CR-1110 or TJ42-SS
Indel	CR 195	TJ85AC, TJ85AC-SS
NovaKool	R1600	CR-1050 or TJ18-SS
NovaKool	R2600	CR-1065, CR-1080 or TJ22-SS
NovaKool	R3800	CR-1110 or TJ42-SS
Norcold	DE-0040	CR-1050 or TJ18-SS
Norcold	DE-0051	CR-1065 or TJ22-SS
Norcold	DE-490	CR-1080
Norcold	DE-0041	CR-1110 or TJ42-SS
Norcold	DE-461	TJ85AC, TJ85AC-SS
Dometic	TJ18	CR-1050
Dometic	TJ22	CR-1065
Dometic	TJ42	CR-1110
WAECO	RPD-50	CR-1050 or TJ18-SS
WAECO	RPD-65	CR-1065 or TJ22-SS
WAECO	RPD-80	CR-1080
WAECO	RPD-110	CR-1110 or TJ42-SS
WAECO	RPD-1190	TJ85AC, TJ85AC-SS

Marine Refrigerators At-A-Glance

Front Loading

PART #	DESCRIPTION	CAPACITY CUBIC FEET	COMPRESSOR	VOLTAGE	Flush Mount Flange: CUT-OUT DIMENSIONS	Choice of: FACE PANEL COLOR	Choice of: FLANGE COLOR
CR-1050	Refrigerator with Freezer Compartment	1.7	Danfoss	12/24V DC, 110/220V AC	16"W x 21"H x 19.4"D	Black, White, Stainless, Br. Stainless	Black, Silver, Br. Stainless
CR-1065	Refrigerator with Freezer Compartment	2.3	Danfoss	12/24V DC, 110/220V AC	18.6"W x 20.7"H x 21"D	Black, White, Stainless, Br. Stainless	Black, Silver, Br. Stainless
CR-1080	Refrigerator with Freezer Compartment	2.8	Danfoss	12/24V DC, 110/220V AC	19.7"W x 25"H x 20.6"D	Black, Stainless, Br. Stainless	Black, Silver, Br. Stainless
CR-1110	Refrigerator with Freezer Compartment	3.8	Danfoss	12/24V DC, 110/220V AC	21.5"W x 29.1"H x 21.7"D	Black, Stainless, Br. Stainless	Black, Silver, Br. Stainless
TJ18-SS	Refrigerator with Freezer Compartment	1.8	Danfoss	12/24V DC (option: 110/220V AC)	15.75"W x 21."H x 19.75"D	Black, Stainless	Black, Stainless
TJ22-SS	Refrigerator with Freezer Compartment	2.2	Danfoss	12/24V DC (option: 110/220V AC)	18.3"W x 21."H x 21"D	Stainless	Stainless
TJ42-SS	Refrigerator with Freezer Compartment	4.2	Danfoss	12/24V DC (option: 110/220V AC)	21.3"W x 30.6"H x 21.5"D	Stainless	Stainless
TJ42RE-SS	All Refrigerator	4.2	Danfoss	12/24V DC (option: 110/220V AC)	21.3"W x 30.6"H x 21.5"D	Stainless	Stainless
TJF42-SS	All Freezer	4.2	Danfoss	12/24V DC (option: 110/220V AC)	21.3"W x 30.6"H x 21.5"D	Stainless	Stainless
TJ85AC	Refrigerator with Freezer Compartment	8.5	Danfoss	12/24V DC, 110/220V AC	23.5"W x 53"H x 23.8"D	Black, Stainless	Black, Stainless

Specialty Appliances

PART #	DESCRIPTION	CAPACITY CUBIC FEET	COMPRESSOR	VOLTAGE	CUT-OUT DIMENSIONS	MATERIAL
CD-030	Drawer Refrigerator	31 quarts	Danfoss	12/24V DC	17"W x 9.8"H x 28.7"D	Metal Housing, Plastic Interior
CB-036	Refrigerator or Freezer	1.3	Danfoss	12/24V DC	23"D x 16"H x 16"W	Stainless-Steel Interior
CB-040	Refrigerator or Freezer	1.4	Danfoss	12/24V DC	19.7"D x 26"H x 13.3"W	Stainless-Steel Interior
CF-035	Portable Refrigerator or Freezer	1.1	Danfoss	12/24V DC 110/220V AC	22.8"L x 15.1"H x 14"W	High Impact Polypropylene
CF-040	Portable Refrigerator or Freezer	1.3	Danfoss	12/24V DC 110/220V AC	22.8"L x 17.5"H x 14"W	High Impact Polypropylene
CF-050	Portable Refrigerator or Freezer	1.7	Danfoss	12/24V DC 110/220V AC	24.8"L x 19.4"H x 14"W	High Impact Polypropylene
CF-080	Portable Refrigerator or Freezer	2.8	Danfoss	12/24V DC 110/220V AC	31"L x 18"H x 19.6"W	Coated Sheet Steel
CF-110	Portable Refrigerator or Freezer	3.7	Danfoss	12/24V DC 110/220V AC	31"L x 22"H x 19.6"W	Coated Sheet Steel



Top Loading Refrigerators / Freezers

CB SERIES

Space Saving Built-Ins

Can be set to operate as either a refrigerator or freezer

- Permanent installation in cupboard space.
- Lid can accommodate laminate to match countertops.
- Ideal for use as a bait freezer or refrigerator.
- Stainless-steel interior housing.
- Impeccable operation in inclined positions.
- Lift-off lid with superior seal and insulation.
- Top loading for improved efficiency and better performance.

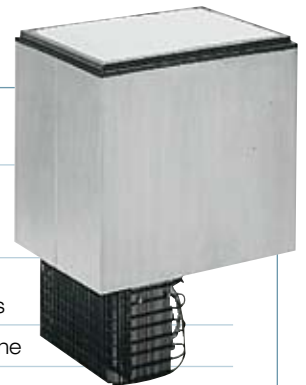
CB-036

Gross Capacity:	1.3 cubic feet (36 liters)
Voltage:	12/24 volts DC Optional accessory for 110/220 volts AC
Average Power Consumption:	45 watts / 3.75 amps
Insulation:	CFC-free polyurethane
Compressor:	Danfoss BD35F
Refrigerant:	Environmentally-safe R134a
Material:	Zinc coated sheet steel with stainless-steel interior; shock resistant plastic base
Color:	CB-036: gray body with dark gray lid
Cut-Out Dimensions:	23"D* x 16"H x 16"W (584mm x 406mm x 406mm) *of which, 7"D (177mm) compressor can be remote mounted up to 5' away
Net Weight:	41 lbs. / 18.59 kg.



CB-040

Gross Capacity:	1.4 cubic feet (39 liters)
Voltage:	12/24 volts DC Optional accessory for 110/220 volts AC
Average Power Consumption:	45 watts / 3.75 amps
Insulation:	CFC-free polyurethane
Compressor:	Danfoss BD35F
Refrigerant:	Environmentally-safe R134a
Material:	Zinc coated sheet steel with stainless-steel interior; shock resistant plastic base
Color:	CB-040: gray body with dark gray lid
Cut-Out Dimensions:	19.7"D x 26"H x 13.3"W (500mm x 660mm x 337mm)
Net Weight:	44 lbs. / 19.95 kg.





Drawer Refrigerators

CD SERIES

Cooling Comfort for Confined Spaces

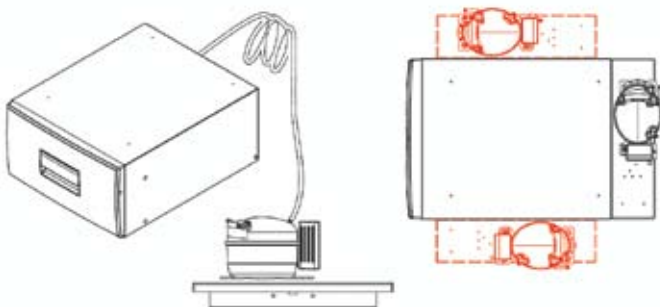
Smart compressor appliance turns any unused nook into a practical 31 quart cooler

- Permanent installation in cupboard space.
- Continually variable thermostat will not accidentally freeze items.
- Cooling unit can be mounted on the rear, left or right side, or up to 5' away.
- Very energy efficient.



CD-030DC

Gross Capacity:	31 quarts (29 liters)
Voltage:	12/24 volts DC Optional accessory for 110/220 volts AC
Average Power Consumption:	40 watts / 3.3 amps
Insulation:	CFC-free polyurethane
Compressor:	Danfoss BD35F
Refrigerant:	Environmentally-safe R134a
Material:	Sturdy metal housing with injection molded parts
Color Options:	CD-030DC: black drawer CD-030DCW: white drawer
Cut-Out	17"W x 9.8"H x 28.7"D** (431mm x 248mm x 728mm)
Dimensions:	**of which, 8.7"D (220mm) compressor can be remote mounted up to 5' away
Net Weight:	44 lbs. / 19.95 kg.



Portable Refrigerators / Freezers

CF SERIES

Refrigerate or Freeze — to 0°F (-17°C)

Can be set to operate as a refrigerator or freezer

- High impact polypropylene (CF-35, 40, 50) cabinet, or polymer coated metal (CF-80, 110) cabinet, with weather-resistant polyethylene lid.
- Quick chill / turbo function runs the compressor at maximum performance until the desired temperature has been reached.
- Memory feature will maintain preset settings if the system is turned off.
- Perfect operation in inclined positions.
- Three stage battery monitor with low voltage shut-off to protect against a dead battery.
- Removable coated wire basket or grid divider eases loading of contents and keeps foods from adhering to interior walls.
- Quickly find contents in the dark with interior light.
- Convenient carrying handles aid in transport and can be easily removed.



CF SERIES

Gross Capacity: **CF-035AC110:** 33 qts, 1.1 cubic feet (31 liters) Holds 41 cans
IC-CF-35: Insulated cover for the CF-35
CF-040AC110: 39 qts, 1.3 cubic feet (36 liters) Holds 48 cans
IC-CF-40: Insulated cover for the CF-40
CF-050AC110: 52 qts, 1.7 cubic feet (48 liters) Holds 68 cans
IC-CF-50: Insulated cover for the CF-50

Voltage: 12/24 volts DC, 110 volts AC

Average Power Consumption: 45 watts / 3.75 amps

Insulation: CFC-free polyurethane foam

Compressor: Danfoss BD35F

Refrigerant: Environmentally-safe R134a

Material: high impact polypropylene cabinet
 weather resistant polyethylene lid

Color: dark gray / pale gray

Dimensions: CF-035AC110: 22.8"L x 15.1"H x 14"W (579mm x 383mm x 355mm)
 CF-040AC110: 22.8"L x 17.5"H x 14"W (579mm x 444mm x 355mm)
 CF-050AC110: 24.8"L x 19.4"H x 14"W (629mm x 492mm x 355mm)

Lid: Removable

Net Weight: CF-035AC110: 33 lbs. / 14.96 kg.
 CF-040AC110: 37 lbs. / 16.78 kg.
 CF-050AC110: 44 lbs. / 19.95 kg.

Features: CF-035AC110: Removable coated wire grid divider
 CF-040AC110 & CF-050AC110: Removable coated wire basket



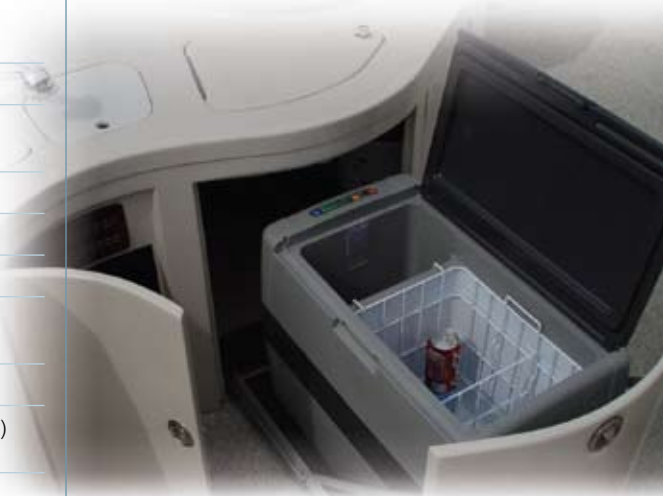
Easily transport foods from grocery store to galley.



*Insulating and Protective Covers
Available For All CF Series Models.*

CF SERIES

Gross Capacity:	CF-080AC110: 85 qts, 2.8 cubic feet (79 liters) Holds 103 cans IC-CF-80: Insulated cover for the CF-80 CF-110AC110: 113 qts, 3.77 cubic feet (106 liters) Holds 144 cans IC-CF-110: Insulated cover for the CF-110
Voltage:	12/24 volts DC, 110 volts AC
Average Power Consumption:	55 watts / 4.5 amps
Insulation:	CFC-free polyurethane foam
Compressor:	Danfoss BD35F
Refrigerant:	Environmentally-safe R134a
Material:	coated sheet steel cabinet weather resistant polyethylene lid
Color:	dark gray / pale gray
Dimensions:	CF-080AC110: 31"L x 18.1"H x 19.6"W (787mm x 459mm x 497mm) CF-110AC110: 31"L x 22"H x 19.6"W (787mm x 558mm x 497mm)
Net Weight:	CF-080AC110: 62 lbs. / 28.12 kg. CF-110AC110: 73 lbs. / 33.11 kg
Features:	Removable coated wire basket and coated wire grid



*CF-50 fits in most
marine slide drawers.*



Do-It-Yourself Cooling Kits

ADLER / BARBOUR SERIES

Performance, Efficiency and Quality ...

... all hallmarks of dependable marine refrigeration by the Adler / Barbour Series. The versatility provides for all-freezer or combination refrigerator/ freezer systems.

Your appreciation of 12/24 volt DC refrigeration on-board will be determined by its ability to develop and maintain freezing temperatures quickly without running your batteries down.

Adler / Barbour's popularity today has grown from its proven and extraordinary ability to perform efficiently in a wide variety of installations. Its uncompromised quality has become the standard by which other systems are measured.

Specifically designed to survive the rigors of harsh marine environment: heat and humidity, erratic or low voltage, continuous use. Unmatched in performance and efficiency. Designed and manufactured in the USA. Join the 50,000 owners who won't settle for less.

- Oversized air condensers.
- Accommodates large refrigerators — up to 15 cubic feet (424 liters) with 3" (76mm) of polyurethane.
- Danfoss BD50F compressor — resulting in 25% more cooling performance (as compared to the BD35F).
- Stainless-steel construction.
- Shrouded forced air condensers.
- Modular phone-jack connection for thermostat.
- Quick connect couplings.
- High CFM fan.
- Built-in trouble-shooting diagnostics.
- Can be installed up to 15' (457cm) from evaporator.
- Precharged and ready to install!



Simple Installation

1. Choose a cooling unit.

The **CU-100** for general boating
The **CU-200** for tropical water boating

2. Select an evaporator.

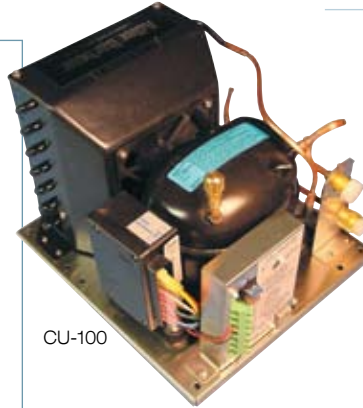
Consider the size and orientation.
Any Adler / Barbour evaporator can be installed up to 15' (457cm) from the cooling unit.

3. Easy installation.

Needed tools: Electric drill with assorted small bits, stubby Phillips screwdriver, hole saw 1.5" in diameter, open end 5/8" wrench, open end 13/16" wrench, and electrical wire.

ADLER / BARBOUR COOLING UNITS

Application:	General Boating: CU-100, CU-103 Tropical Water Boating: CU-200
Voltage:	CU-100, CU-200 12 volts DC CU-103 , 12/24 volts DC
BTU Rating:	650 / hr. maximum @ +25F evaporator
Compressor:	Danfoss BD50F
Refrigerant:	Environmentally-safe R134a
Material:	Stainless-steel
Dimensions:	11.1"D x 10"W x 7.5"H (281mm x 254mm x 190mm)
Net Weight:	18 lbs. / 8.64 kg.



CU-100



CU-200

ADLER / BARBOUR EVAPORATORS

Application:	Medium sized refrigerator to small freezer, closed evaporator: VD-150
Orientation:	Top loading
Cooling Capacity:	9 cubic foot (254 liters) refrigerator
Dimensions:	10.5"L x 11"H x 6"D 266mm x 279mm x 152mm)
Net Weight:	12 lbs. / 5.44 kg.



Application:	Medium sized refrigerator to small freezer, closed evaporator with door: VD-151
Orientation:	Front loading
Cooling Capacity:	9 cubic foot (254 liters) refrigerator
Dimensions:	10.75"L x 7"H x 11.25"D 273mm x 177mm x 285mm)
Net Weight:	10 lbs. / 4.53 kg.



Application:	Large sized refrigerator to medium freezer, closed evaporator: VD-152
Orientation:	Top loading
Cooling Capacity:	15 cubic foot (424 liters) refrigerator
Dimensions:	15"L x 12"H x 6"D 381mm x 304mm x 152mm)
Net Weight:	13 lbs. / 5.89 kg.



Application:	Large sized refrigerator to medium freezer, closed evaporator with door: VD-153
Orientation:	Front loading
Cooling Capacity:	15 cubic foot (424 liters) refrigerator
Dimensions:	15.5"L x 7.5"H x 12"D 393mm x 190mm x 304mm)
Weight:	14 lbs. / 6.35 kg.



Application:	Medium to small sized freezer, power plate evaporator with holdover capabilities: VD-160
Cooling Capacity:	4 cubic foot (113 liters) freezer
Dimensions:	19"L x 11.25"H x 1.25"D 482mm x 285mm x 31mm)
Weight:	4 lbs. / 1.8 kg.



COOLMATIC SERIES

Custom-Made Cooling Solutions For All Applications

80 SERIES Professional Cooling Units

- Designed for small and medium refrigerator capacities and for use in warmer water.
- Applications up to 8.8 cubic feet maximum for normal refrigeration or 2.5 cubic feet for deep-freezing.
- Equipped with a power-regulated Danfoss BD35F compressor.
- 3 air-cooled units of different body shapes.
- 6 evaporator types designed to exactly match the performance of the compressor.



CU-84



CU-85



CU-86



80 SERIES COOLING UNITS

Application:	Horizontal, Layout: CU-84 Square Layout: CU-85 Vertical Layout or Wall Mount: CU-86
Voltage:	12/24 volts DC
Cooling Volumes:	Up to 8.8 cubic feet max. for normal refrigeration or 2.5 cubic feet for deep-freezing applications
Refrigerant:	Environmentally-safe R134a

Dimensions:	CU-84: 5.1"D x 15.2"W x 6.1"H (129mm x 386mm x 155mm) CU-85: 8.7"D x 8.7"W x 6.1"H (220mm x 220mm x 155mm) CU-86: 7.6"D x 8.7"W x 9"H (193mm x 220mm x 228mm)
Net Weight:	CU-84: 13.2 lbs. / 5.98 kg. CU-85: 13.2 lbs. / 5.98 kg. CU-86: 14.3 lbs. / 6.4 kg.

80 SERIES EVAPORATORS

Application: L evaporator for medium refrigerator: **VD-04**

Cooling Capacity: 4.5 cubic feet (127 liters)

Dimensions: 14.8"W x 10"H x 3.9"D
(375mm x 254mm x 99mm)

Net Weight: 3.3 lbs. / 1.49 kg.



Application: Plate evaporator for medium refrigerator: **VD-05**

Cooling Capacity: 4.5 cubic feet (127 liters)

Dimensions: 14.8"W x 13.7"H x 1"D
(375mm x 348mm x 25.4mm)

Net Weight: 3.3 lbs. / 1.49 kg.



Application: Angle evaporator for medium refrigerator: **VD-08**

Cooling Capacity: 5.6 cubic feet (158 liters)

Dimensions: 13.4"W x 17.7"H x 10.6"D
(340mm x 449mm x 269mm)

Net Weight: 4.4 lbs. / 1.99 kg.



Application: O evaporator for medium refrigerator: **VD-09**

Cooling Capacity: 5.6 cubic feet (158 liters)

Dimensions: 14.4"W x 5.5"H x 10.6"D
(365mm x 139mm x 269mm)

Net Weight: 4.4 lbs. / 1.99 kg.



Application: Plate evaporator for medium refrigerator: **VD-18**

Cooling Capacity: 4.5 cubic feet (127 liters)

Dimensions: 9.8"W x 13.7"H x 1"D
(248mm x 347mm x 25.4mm)

Net Weight: 3.1 lbs. / 1.4 kg.



Application: Circulating air evaporator for medium refrigerator: **VD-15**

Cooling Capacity: 7 cubic feet (198 liters)

Dimensions: 8.6"W x 10.8"H x 2.6"D
(218mm x 274mm x 66mm)

Net Weight: 4.4 lbs. / 1.99 kg.



CS-NC-15 COOLING KIT

From Passive Cooler to Active Compressor Refrigerator

- Ideal for converting an existing, passive, insulated cooling area into a full, compressor-powered refrigerator.
- Cut an opening in the side of the coolbox and push the unit into the adjoining section. Fasten it from the inside to the evaporator housing using the pre-cut assembly holes.
- Integrated rubber seal ensures that the coolbox is securely sealed. Coolant lines are fully assembled and connected at the factory.



Application:	Vertical Layout or Wall Mount: CS-NC-15
Voltage:	12/24 volts DC
Cooling Volumes:	Up to 8.8 cubic feet max. for normal refrigeration or 2.5 cubic feet for deep-freezing applications
Refrigerant:	Environmentally-safe R134a
Dimensions:	9"D x 10"W x 14"H (228mm x 254mm x 355mm)
Net Weight:	14 lbs. / 6.35 kg.

Compact Refrigeration Systems

POLARMATE SERIES

Ideal for Small Boxes or Day Sailing Applications

Grunert PolarMate models are offered in air, or air/water-cooled condensers for maximum versatility. Water-cooled models provide increased efficiencies and superior operation in high ambient temperatures. Two sizes of evaporators can be configured for custom applications. Due to its small size, PolarMate models can easily be applied to many small applications.

The standard model features an enclosed ductable air-cooled condenser as well as a water-cooled condenser for maximum versatility. Warm condenser air can be ducted away from the unit and discharged into a more desirable area.

- LeakView Protection: An ultraviolet dye system which enables small leaks to be located visually with a UV light.
- Danfoss compressor.
- Self-sealing quick connect fittings.
- Can be installed up to 15' from evaporator.
- Precharged and ready to install!



Compressor Type	Evaporating Pressure	Air/Water Cooled	Air Cooled Only
12/24V DC	6 psi	325	246
	18 psi	538	433
115V AC	6 psi	336	213
	18 psi	582	460

POLARMATE MODELS

MODEL No.	ARCTIC Air Cooled PMEA08/12V DC	ANTARCTIC Air/Water Cooled PMEAW08/12V DC	ANTARCTIC-AC Air/Water Cooled PMEAW05	EVAP I	EVAP II
Voltage:	12/24 volts DC	12/24 volts DC	115 /60/ 1 volts AC		
Refrigerant Charge (oz./g):	26 / 737	50 / 1420	50 / 1420	76 / 2152	76 / 2151
Capacity ² :	433	538	582		
Capacity ³ :	246	325	336		
Max. Watts ² :	65.4	68.5	212.8		
Max. Watts ³ :	47.6	55.0	196.7		
Max. Amps ² :	5.45 / 2.7	5.71 / 2.9	1.85		
Max. Amps ³ :	3.97 / 2	4.58 / 2.3	1.71		
COMPRESSOR					
Capacity (hp):	1 / 12	1 / 12	1 / 20		
Power (watts):	63	54	37.3		
Dimensions (in./cm)					
Length:	10.25 / 26	10.25 / 26	11 / 28	10.5 / 26.7	15.5 / 39.4
Depth:	11 / 28	11 / 28	12.5 / 31.8	6 / 15.2	6 / 15.2
Height:	6.75 / 17.1	6.7 / 17.1	7.5 / 19	11 / 27.9	11 / 27.7
Net Weight (lbs./kg):	14.8 / 6.7	15.6 / 7.4	22 / 10	6 / 2.7	7 / 3.2

² Air cooled capacities at 20°F evaporator temperature and 120°F condensing temperature. Water cooled capacities at 20°F evaporator temperature 100°F condensing temperature.

³ Air cooled capacities at 0°F evaporator temperature and 120°F condensing temperature. Water cooled capacities at 0°F evaporator temperature 100°F condensing temperature.

MARINER SERIES

Grunert Holdover Refrigeration Systems

Designed for use with 12 or 24 volt DC power supplies, the Mariner Series has been proven to be the ideal system for seafaring vessels with or without on-board AC power. Its unique design allows for automatic operation by either the alternator or energized battery charger. An electrical interlock prevents accidental battery drain.

- Unique compact base fits any application.
- Standard equipped with cupronickel seawater condenser for improved efficiency and lower operating pressure.
- Effectively cools one or multiple boxes of virtually any configuration.
- Remote electrical box is completely enclosed to protect all components.
- Condensing units can be installed in any convenient location.
- Continuous duty cycle rating, and replaceable brushes on all DC motors.



MARINER MODELS

MODEL No.	DC425BD	DC450BD	DC475BD	DC4100BD
Refrigerant Charge:	26 oz.	26 oz.	55 oz.	55 oz.
Capacity BTU/H • 26°F ¹ :	1800	3400	5000	6500
Capacity BTU/H • 0°F ¹ :	1600	2800	4200	5500
Electrical Motor Voltage (DC):	12	12 / 24	12 / 24	12 / 24
Amperage:	21	40 / 20	58 / 29	80 / 39
Max. Circ. Breaker ² :	30	50 / 30	70 / 40	100 / 50
Dimensions				
Depth:	18"	18"	18"	18"
Width:	14.5"	14.5"	16.5"	16.5"
Height:	11"	11"	12"	12"
Weight:	86 lbs.	90 lbs.	95 lbs.	98 lbs.

¹ BTU/H ratings are the average rate of heat extraction from holdover plates and are not the capacity of the compressor or condensing unit. These figures are to be used to determine run times to maintain box design temperatures. ² For wire size, ampacity, etc., refer to ABYC Standards, section E-9. (DC Voltage)

AC Operation Refrigeration Systems

PASSAGEMAKER SERIES

115 and 230 Volt AC Models

Grunert Passagemaker compressors are hermetically sealed for quiet, efficient operation. Vibration isolators are incorporated in all mounting platforms to provide additional noise reduction.

- Filter/drier is replaceable without refrigerant charge loss.
- Effectively cools one or multiple boxes of virtually any configuration.
- Sight glass / moisture indicator assembly to monitor system refrigerant charge.
- Remote electrical box is completely enclosed to protect all components.
- 5' harness allows for a dry, accessible mounting location.
- Low 12 voltage controls provide an extra margin of safety.

Electrical Box Dimensions:
10.875"D x 10.625"W x 4"H



PASSAGEMAKER MODELS

MODEL No.	AC425	AC450	AC475	AC4100Z	AC4150Z	AC4200Z
Refrigerant Charge:	26 oz.	50 oz.	50 oz.	50 oz.	76 oz.	76 oz.
Capacity BTU/H • 26°F ² :	1850	3400	5000	6500	9000	15000
Capacity BTU/H • 0°F ² :	1650	2800	4200	5500	7000	11900
Electrical RLA = 115 V / 230V Water Cooled:	5.9 / 2.9	6.7 / 3.0	15.2 / 7.7	/ 10.9	/ 10.9	/ 18.6
Electrical RLA = 115 V / 230V Air/Water Cooled:	6.9 / 3.4	7.7 / 3.5	16.2 / 8.2	/ 11.4	/ 11.4	
Electrical LRA = 115 V / 230V:	40 / 20.5	68 / 34	59 / 37	/ 56	/ 56	/ 107
Max. Circ. Breaker 115 V / 230V:	15 / 10	20 / 10	35 / 15	/ 25	/ 30	/ 40
Min. Circ. Breaker 115 V / 230V:	10 / 5	16 / 7	27 / 14	/ 20	/ 20	/ 30
Dimensions						
Depth:	14.1"	14.1"	14.1"	20"	20"	20"
Width:	13.1"	13.1"	13.1"	17"	17"	17"
Height:	10.5"	13.6"	14.8"	15.3"	15.3"	16"
Weight:	47 lbs.	78 lbs.	74 lbs.	75 lbs.	77 lbs.	92 lbs.

² BTU/H ratings are the average rate of heat extraction from holdover plates and are not the capacity of the compressor or condensing unit. These figures are to be used to determine run times to maintain box design temperatures.

Engine Driven Systems

CARIBBEAN SERIES

Powered by the Main Engine

Designed for boats that utilize power from their main engine. Typical requirements are compressed into one or two engine run-times per 24 hour period.

- Effectively cools one or multiple boxes of virtually any configuration.
- Receiver, accumulator, drier, pressure switch and valves are on one convenient pallet.
- Components can be remote mounted.
- Equipped with a PVC and cupronickel raw water condenser for improved efficiency and lower operating pressure. (Air-cooled model is not available.)



CARIBBEAN MODELS

MODEL No.	ED75/12	ED75/24	ED150/12	ED150/24
Refrigerant Charge:	6.1 oz.	6.1 oz.	16 oz.	16 oz.
Capacity BTU/H • 26°F ¹ :	5000	5000	9000	9000
Capacity BTU/H • 0°F ¹ :	4200	4200	7000	7000
Electrical Motor Voltage (DC):	12	24	12	24
Watts (coil):	48	48	48	48
Amperage:	4	2	4	2
Dimensions				
Depth:	5.5"	5.5"	7.5"	7.5"
Width:	9"	9"	9"	9"
Height:	5.75"	5.75"	11.25"	11.25"
Weight:	17 lbs.	17 lbs.	25 lbs.	25 lbs.

¹ BTU/H ratings are the average rate of heat extraction from holdover plates and are not the capacity of the compressor or condensing unit. These figures are to be used to determine run times to maintain box design temperatures.

For Use In Refrigeration and Freezer Systems

... such as cockpit refrigerators / freezers or catch-box chillers (not hold-over plate systems), built-in galley refrigerators / freezers, or small walk-in coolers.

The condensing unit works in conjunction with evaporator plates installed in an insulated box, or a box wrapped with evaporator tubing. Box temperatures between -5°F and 40°F can be achieved with proper application.

- Refrigerating / freezing condensing unit is housed in an attractive white aluminum enclosure.
- Both air and water condensers. The air-cooled condenser is supplemented by a durable cupronickel water condenser. This double condenser configuration will ensure that the unit performs efficiently in hot engine rooms, while also allowing full air-cooled operation when no cooling water is available.
- Can be mounted on a vertical bulkhead or a horizontal shelf.
- Drain pan allows any condensate to be routed to the bilge or sump.
- 1/4, 3/8, and 1/2 HP compressors available.
- 115 volts 50 / 60 Hz, and 230 volts 50 Hz models.
- Self-sealing, quick connect fittings.
- Charged with leak detector dye.
- Available options:
 - Pre-charged refrigerant lines, in copper or flexible hose, are available in lengths up to 25 feet.
 - Dual box system: Two different boxes at two different temperatures on one condensing unit.
 - Digital thermostats.



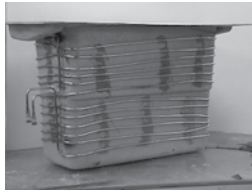
KRA SERIES MODELS

MODEL No.	KRA025	KRA025CK	KRA038	KRA038CK	KRA050
Voltage:	115 volts AC	220 volts AC	115 volts AC	220 volts AC	115 volts AC
COMPRESSOR					
Horsepower:	1/4	1/4	3/8	3/8	1/2
Evaporating Pressure:	2 psi / 12 psi	2 psi / 12 psi	2 psi / 12 psi	2 psi / 12 psi	2 psi / 12 psi
Air-Cooled Only:	1170 / 1880	1170 / 1880	1545 / 2485	1545 / 2485	1860 / 3425
Air / Water-Cooled:	1495 / 2440	1495 / 2440	1980 / 3230	1980 / 3230	2405 / 4165
Frequency (Hz):	50 / 60	50	50 / 60	50	50 / 60
Run Amps:	6.2	2.7	6.6	3.7	8.9
Dimensions					
Width:	14.25"	14.25"	14.25"	14.25"	16.1"
Depth:	8.75"	8.75"	8.75"	8.75"	10.3"
Height:	14.75"	14.75"	14.75"	14.75"	17.5"
Weight:	50 lbs.	50 lbs.	51 lbs.	51 lbs.	65 lbs.

CUSTOM EVAPORATORS

CUSTOM WRAPPED BOXES

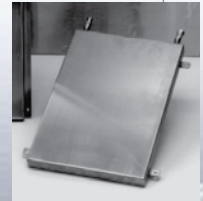
- Excellent performance as a freezer or refrigerator.
- Contents include fiberglass box, tubing wrap and insulation.
- Inside of freezer box is free of all refrigeration equipment, and has a clean look.
- Factory sealed refrigerant connections of evaporator tubing.
- Fewer holes through box equals less chance of content leakage.
- Quick and easy clean-up of interior.



Contact Dometic's applications department for assistance in designing your refrigeration system.

CUSTOM FLAT PLATES

- Excellent performance as a freezer or refrigerator.
- Plate can be built to the exact dimensions of your particular custom box requirements.
- Plate and tubing is constructed of durable 18 gauge 304 stainless-steel which will resist corrosion from harsh environments and damage from objects in the box.
- Total thickness of plate is .625" which allows for total use of box interior.
- Refrigerant tubing is spot welded to the underside of the plate.



Contact Dometic's applications department for assistance in designing your refrigeration system.



Ice Crushing Systems


ESKIMO ICE SERIES

A Catch—A Treasure That Should Be Kept *Ice Cold Fresh*

State-of-the-art ice crushing systems

Self-Contained and Remote Models with Digital Controls:

- Up to 2 remote mounted digital user interface panels.
- Pre-charged system.
- Ice level control.
- Start time delay.
- Sensors monitor all functions of system.
- Improved fresh-water float switch.
- Includes water filter.
- Manual reset to restart system from lock-out.
- Photo-electric ice level sensor.
- Redesigned refrigerant meter for improved performance in cold water.
- Optional covers for self-contained models. Protects sides/top and improves appearance.
- User modifiable programming.

rushed ice—preferred by fishermen, cools more quickly and packs better. Ice is produced and pumped from a remote location such as an engine compartment or storage area to nearly any desired location, such as a fish box, drink box or cooler.

Easy to install units were designed to be remote mounted, such as below deck—protected from salt spray.

Can produce up to 600 pounds of ice a day to hose lengths of 35 feet. Generates ice in minutes, from the time unit is turned on.

Remote model EI600CD for use when space is a premium.



Auger Unit



Electrical Box

Condensing Unit





Now Available with Smart Logic Digital Displays

Automatic reset with key functions without going to machine space.

Full menu of sensor and status light monitors:

- Gas Pressures
- Water Level
- Ice Clogs
- Ice Levels
- Auger Motor

ESKIMO ICE SERIES SELF-CONTAINED MODELS

	SELF-CONTAINED	SELF-CONTAINED
Voltage:	115 volts AC	230 volts AC
Frequency:	60	60
Running Amps:	16	8
Capacity ¹ :	600 lbs. / day*	600 lbs. / day*
Charge:	16 oz.	16 oz.
Water Consumption:	72 g / day	72 g / day
Dimensions		
Width:	17.5"	17.5"
Depth:	23.5"	23.5"
Height:	22"	22"
Weight:	135 lbs.	135 lbs.

*Depends on hose length and climate conditions.

¹At 75°F (24°C) feed water temperature and 80°F (27°C) seawater temperature, using fresh water for the feed water.



Self-contained model EI600D-115. All parts on a single chassis for easy installation.

ESKIMO ICE SERIES REMOTE MODELS

	REMOTE Condensing Unit	REMOTE Auger Unit	REMOTE Condensing Unit	REMOTE Auger Unit	REMOTE Control Box
Voltage:	100 / 115 volts AC	100 / 115 volts AC	200 / 230 volts AC	200 / 230 volts AC	
Frequency:	50 / 60	50 / 60	50 / 60	50 / 60	
Running Amps:	7.5	3.2	5.3	1.2	
Max. Amps:	60	3.2	46	1.2	
Capacity ¹ :		600 lbs. / day		600 lbs. / day	
Charge:	26 oz.	12 oz.	26 oz.	12 oz.	
Water Consumption:		72 g / day		72 g / day	
Dimensions					
Width:	12.88"	14.25"	12.88"	14.25"	9.25"
Depth:	12.88"	16.38"	12.88"	16.38"	5.38"
Height:	15"	20.88"	15"	20.88"	6.38"
Weight:	67 lbs.	83 lbs.	67 lbs.	83 lbs.	4 lbs.

*Depends on hose length and climate conditions.

¹At 75°F (24°C) feed water temperature and 80°F (27°C) seawater temperature, using fresh water for the feed water.

Dometic is a customer-driven, world-leading provider of innovative leisure products for the caravan, motorhome, and marine markets. Dometic offers a complete range of air conditioners, refrigerators, awnings, cookers, sanitations systems, lighting, windows, doors and other equipment that makes leisure life more comfortable away from home.

Dometic also provides refrigerators for specific use in hotel rooms, offices and for storage of medical products and wine. Dometic's products are sold in almost 100 countries and are produced mainly in Dometic's own production facilities around the world. Dometic has more than 4,400 employees.

Dealer/Distributor:

DOMETIC CORPORATION, ENVIRONMENTAL DIVISION

2000 N. Andrews Ave. Ext. | Pompano Beach, FL 33069 USA | 954-973-2477 | FAX 954-979-4414
P.O. Box 15299 | Richmond, VA 23227 USA | 804-746-1313 | Facsimile: 804-746-7248
www.DometicEnviro.com | sales@DometicEnviro.com

United States & Canada Service Only:

8:00 AM to 5:00 PM Eastern Time

International Sales & Service:

Europe & the Middle East: Call +44(0)870-330-6101
For all other areas visit our website to find your nearest distributor.

www.DometicEnviro.com